

THYRATRON TGI1-700/25M

Characteristics of TGI1-700/25M	
Anode voltage, kV	25
Reverse anode voltage, kV	1.25 – 5.0
Anode current in pulse, A	700
Anode current average, A	1.0
Current anode impulse time, microseconds	0.5 – 11.0
Steepness of anode current pulse edge, A/s	1.5×10^9
Pulse repetition rate, pulse/s	500
Warm-up time, min	7
Heater current, A	22
Dimensions ØxH, mm	135x220

Note: the thyratrons operate at pulse repetition rate to 50000 pulse/s on condition of decrease of pulse and average power.



The draft:

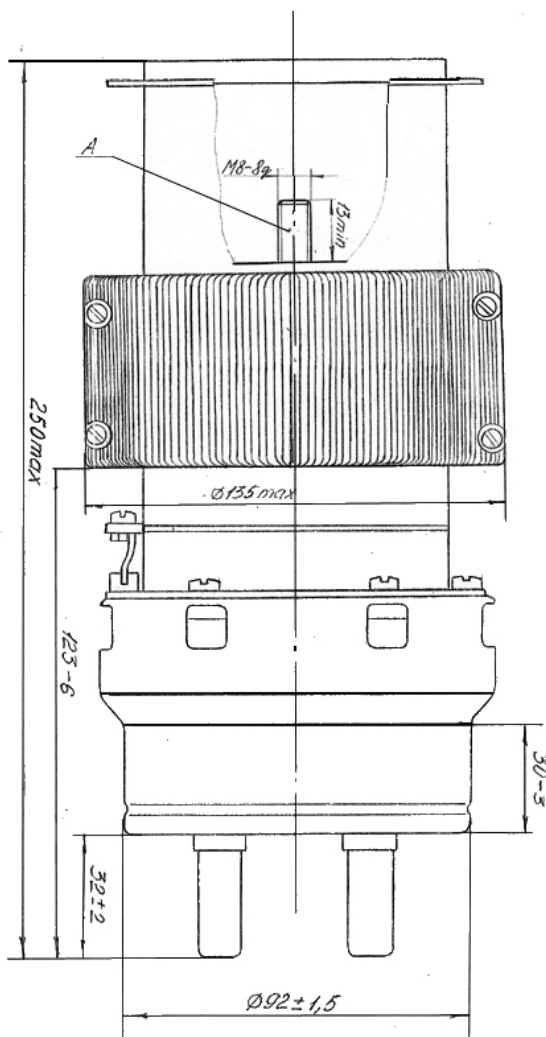
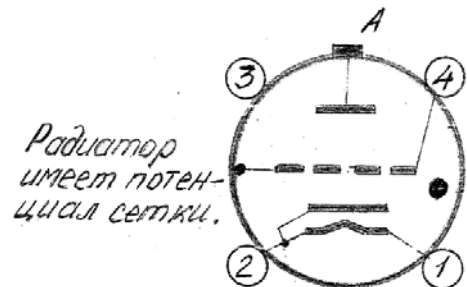


Схема соединения электродов с выводами



*1 - подогреватель
2 - Катод, подогреватель
3 - свободный вывод
4 - сетка
A - Анод*

A scheme of connecting electrodes with outlets:

The radiator has a potential of the grid.

- 1 – the reheater
- 2 – cathode, the reheater
- 3 – the blank outlet
- 4 – the grid
- A – anode

JSC “PLASMA”

24 Tsiolkovsky Street, Ryazan, 390023, Russia

phone: (4912) 24 90 74, fax: (4912) 44 06 81.

E-mail: sales@plasmalabs.ru. Website: www.plasmalabs.ru