

GN-15, GN-15-1, GN-25, GN-25-1, GN-40, GN-50, GN-60, GN-70, GN-80 Lasers

Lasers of GN series represent gas lasers of continuous operation mode and emission in the red spectral region at $0.63\mu\text{m}$ wavelength; single-mode (TEM₀₀) and multimode (TEM_{mn}) with emission power from 15mW to 80mW having polarized and non-polarized emission.

These lasers can be used in control and measuring equipment, heterodyne systems, polygraphic industry, holography, medical equipment and in some other processing and laboratory installations as a source of coherent monochromatic emission.

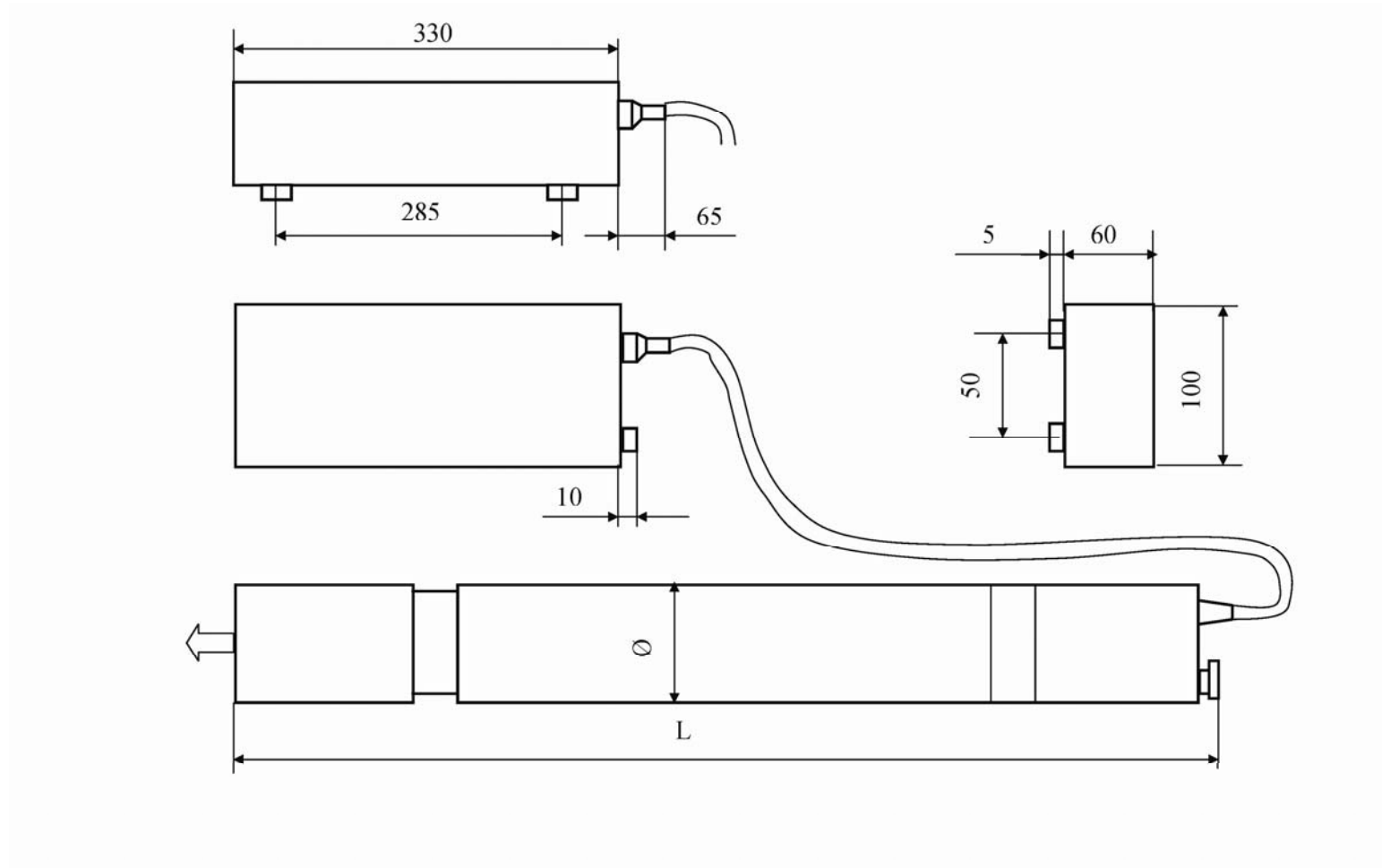
The lasers have simple design and are convenient in service. They comprise of laser head and high-voltage power supply.

A coaxial tube with cold cathode is put at the basis of the laser head design. Thermoresistant mirrors in the tube are attached by means of hard-sealing method, which allows to involve progressive high-temperature processes in the technology of its manufacturing. All these factors provide high reliability, long lifetime and stable output parameters of the lasers as a whole.



Parameters	GN-15	GN-15-1	GN-25	GN-25-1	GN-40	GN-50	GN-60	GN-70	GN-80
Output power, mW, not less	15.0	15.0	25.0	25.0	40.0	50.0	60.0	70.0	80.0
Spectral structure	TEM ₀₀				TEM _{mn}				
Polarization, not less	1:1	100:1	1:1	100:1	1:1				
Beam diameter, mm, not more	1.5				3.0	7.0			
Beam divergence, mrad, not more	1.2				2.5	3.0			
Power consumption, W, not more	65		80			150			
Dimensions of laser head, mm, not more	Ø56x685		Ø56x875			Ø52x1350		Ø52x1480	
Dimensions of power supply, mm, not more	100x65x330								
Mass, kg, not more (laser head/power supply)	1.5/2.5		2.0/2.5			3.0/2.5			

Dimensional drawing



JSC Research Institute of Gas Discharge Devices «PLASMA»

24 Tsiolkovsky Street, Ryazan 390023, Russia Phone: +7(4912) 24 90 62, Fax: +7(4912) 44 06 81.

E-mail: sales@plasmalabs.com Http: www.plasmalabs.com